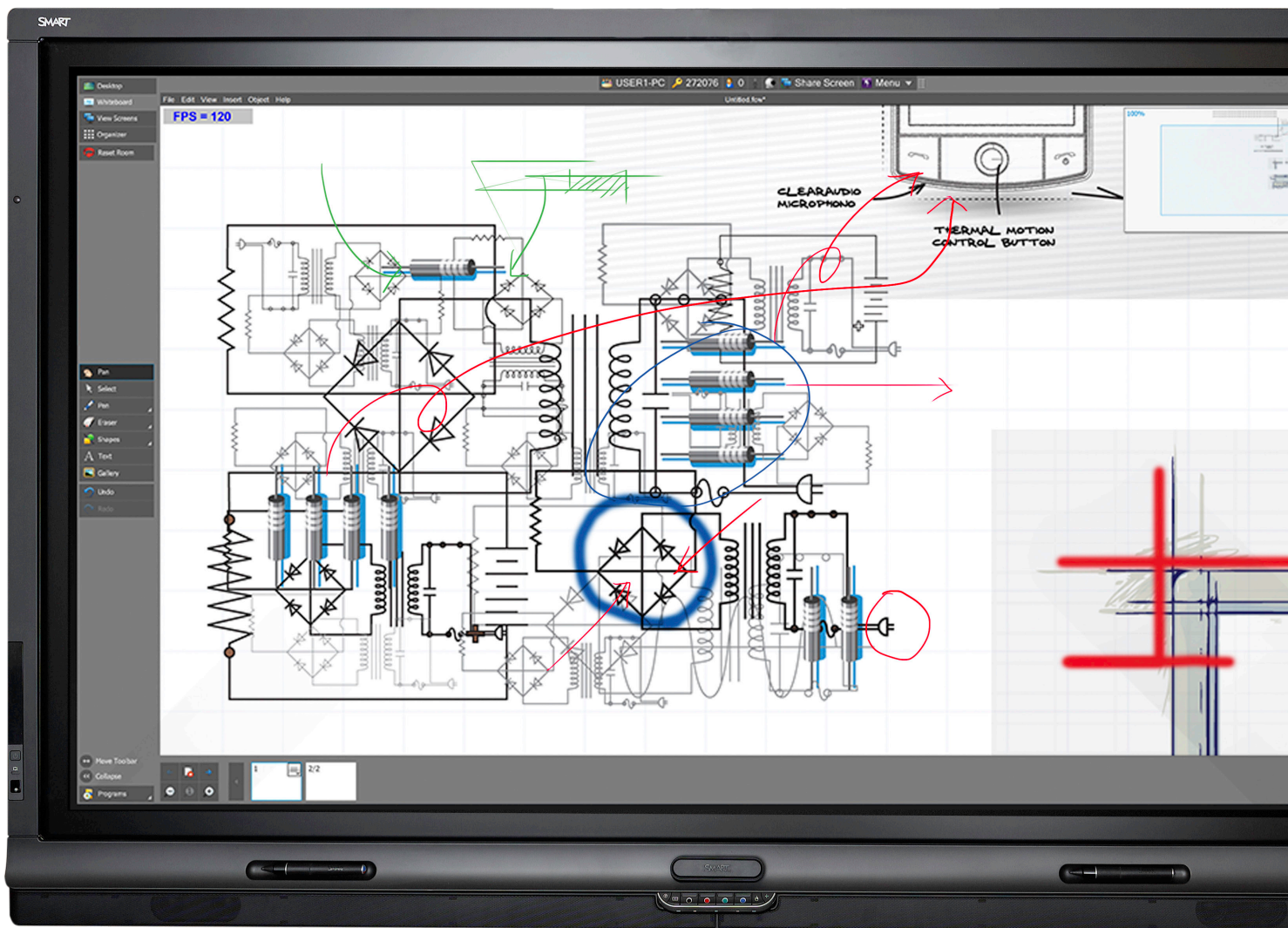


SMART Board® 8000 series

Interactive Flat Panel



Key features



	8055i	8070i	8084i
Screen Size diagonal	140cm (55")	178cm (70")	213.4cm (84")
Resolution	UHD 3840x2160	HD1080p	UHD 3840x2160
Aspect Ratio	16:9	16:9	16:9
Presence detection	Yes	Yes	Yes
Integrated speakers	Yes	Yes	Yes

Touch-enabled e-LED LCD display

A durable, high quality display that uses smooth, anti-glare glass to create an optimal touch experience. 4K ultra HD resolution is available with the 8055i and the 8084i models.

Multi-tool, multi-touch

Work naturally by using touch gestures to write and manipulate content or simply pick up a pen or eraser. Two people can interact with content simultaneously.

Object awareness

Functionality automatically adjusts depending on the tool or object being used, whether it's a pen, finger, eraser or palm.

SMART Meeting Pro® 4.0 software (included)

This productivity and collaboration software enables you to collaborate in the fourth dimension by working in the Unbound Workspace to create, share and interact with content.

Presence Detection

The display automatically turns on when people are nearby and turns off when no movement is detected.

Touch gestures

Zoom, flick and rotate objects easily – the 8000 series supports touch gestures like those used in the Microsoft Windows 7 operating system.

Support for Multiple Displays

Users can simultaneously write as well as share content and applications on up to 16 connected displays.

SMART ink™ 3.0

New with SMART Ink 3.0, the dynamic ink toolbar appears as soon as you pick up a pen. Easily select ink tools, navigate through application specific ink tools and discover enhanced text injection and editing tools.

Pen iQ™

The next generation 8055i also features dual magnetic pens, one red and one black, designed for a customized multi-user experience. Pen color can also be changed through the integrated ink tool bar.

Authorized reseller:

SMART Technologies

Toll free 1.866.518.6791 (U.S./Canada)

or +1.403.228.5940

smarttech.com